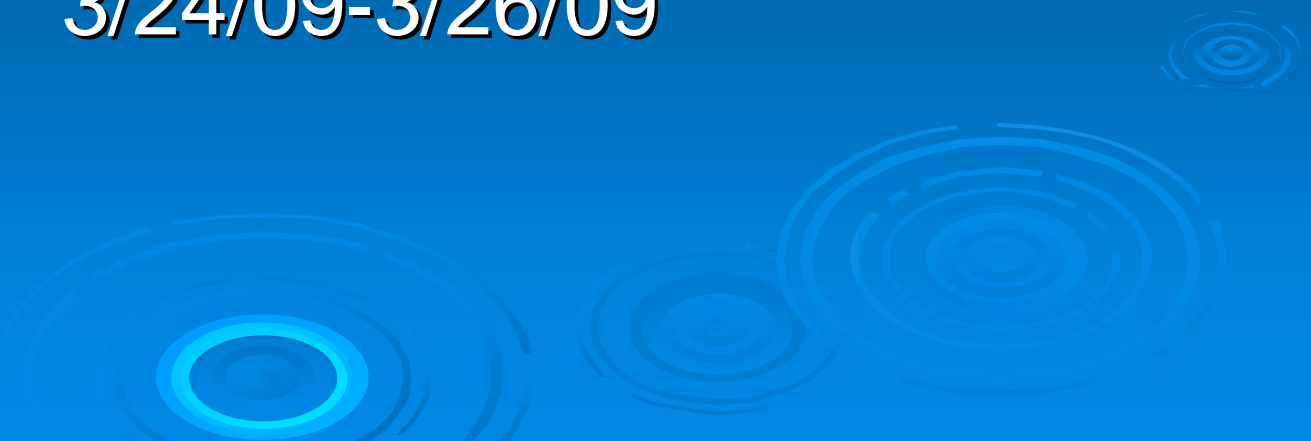


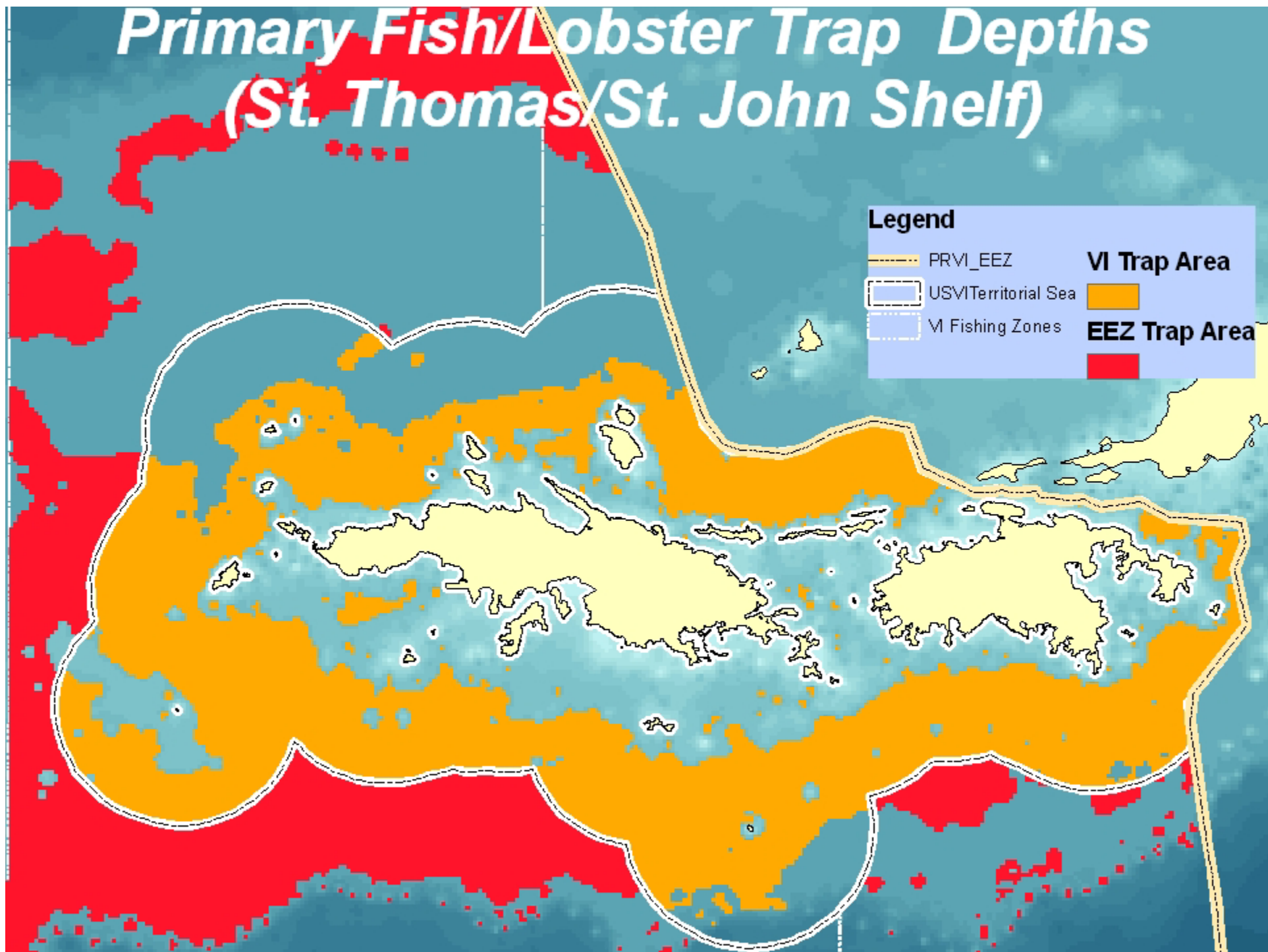
ACL Scoping Document

CFMC

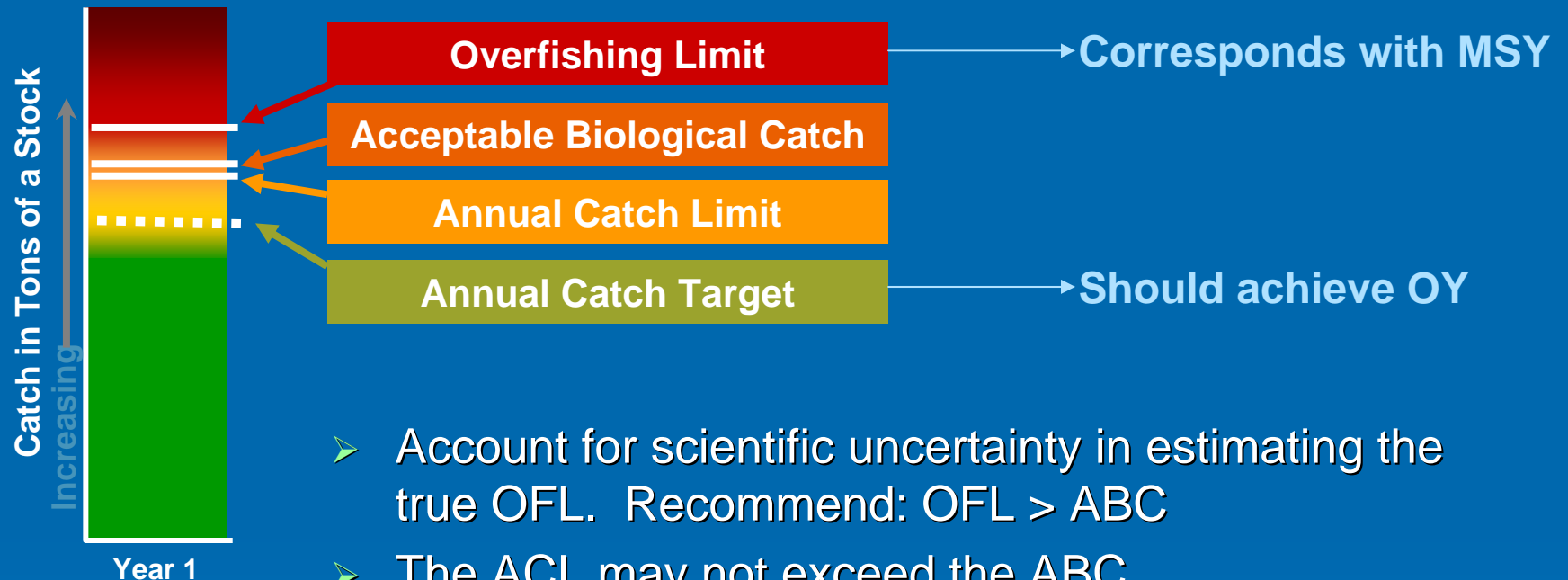
3/24/09-3/26/09



Primary Fish/Lobster Trap Depths (St. Thomas/St. John Shelf)



MSRA Management Reference Points

$$OFL \geq ABC \geq ACL \geq ACT$$


- Account for scientific uncertainty in estimating the true OFL. Recommend: $OFL > ABC$
- The ACL may not exceed the ABC.
 - ABC is one of the “fishing level recommendations” under MSA § 302(h)(6).
- Account for management uncertainty in controlling the actual catch to the target. Recommend: $ACL > ACT$



“Overfished” Species

- Nassau Grouper
- Conch
- Deepwater Snappers
- Grouper Unit 4 (Yellowfin, etc.)
- Parrotfish

Species not needing action

- Nassau Grouper
- Queen conch off St Thomas/St John and Puerto Rico

Action 2: Annual Catch Limits for Queen conch off St. Croix

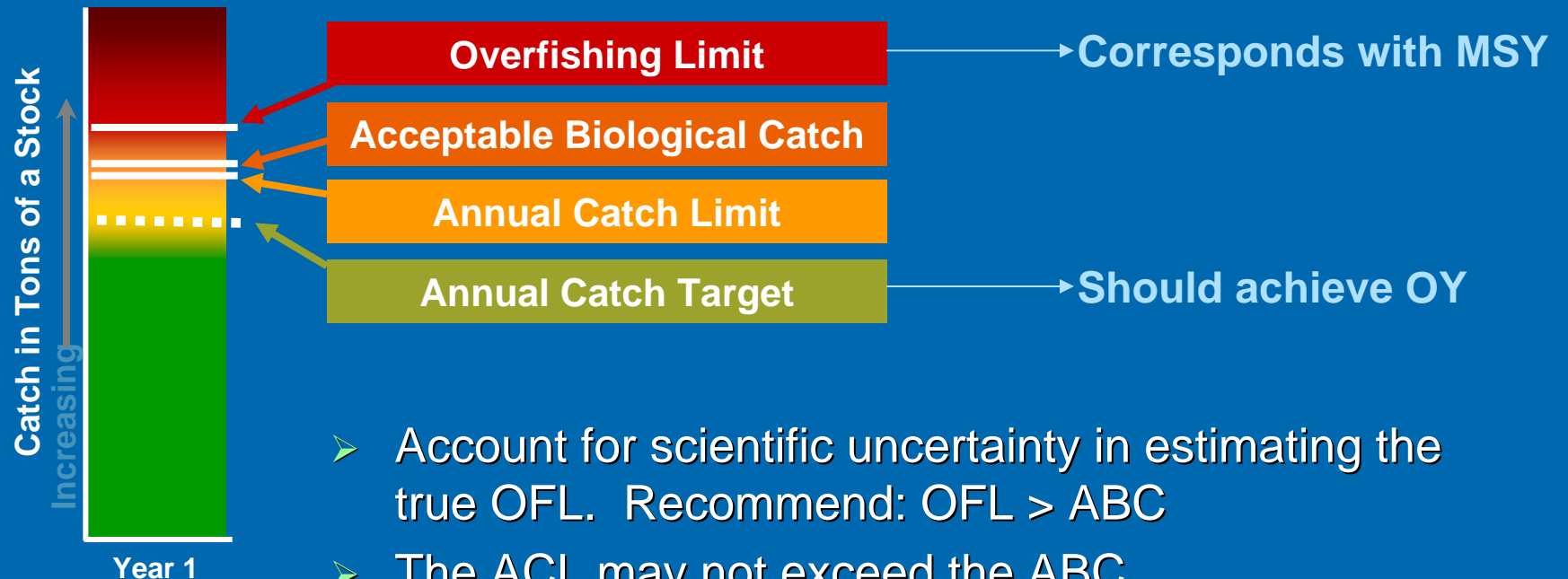
- **Alternative 1. Do not set an ACL for queen conch off St. Croix**
- **Alternative 2. Set the ACL for queen conch off St. Croix equal to:**
 - **Sub alternative A. Zero for the EEZ and do not establish a state water ACL.**
 - **Sub alternative B. The average landings during 1994-2006 = 90,000 pounds. The ACL would include both state and federal water landings.**

Action 2: Annual Catch Limits for Queen conch off St. Croix

- **Sub alternative C. The current allowable catch level established by the U.S.V.I. government for St. Croix = 50,000 pounds. The ACL would include both state and federal water landings.**
- **Sub alternative D. Zero in the EEZ. The state waters ACL would be set equal to the current allowable catch level established by the U.S.V.I. government for St. Croix = 50,000 pounds.**

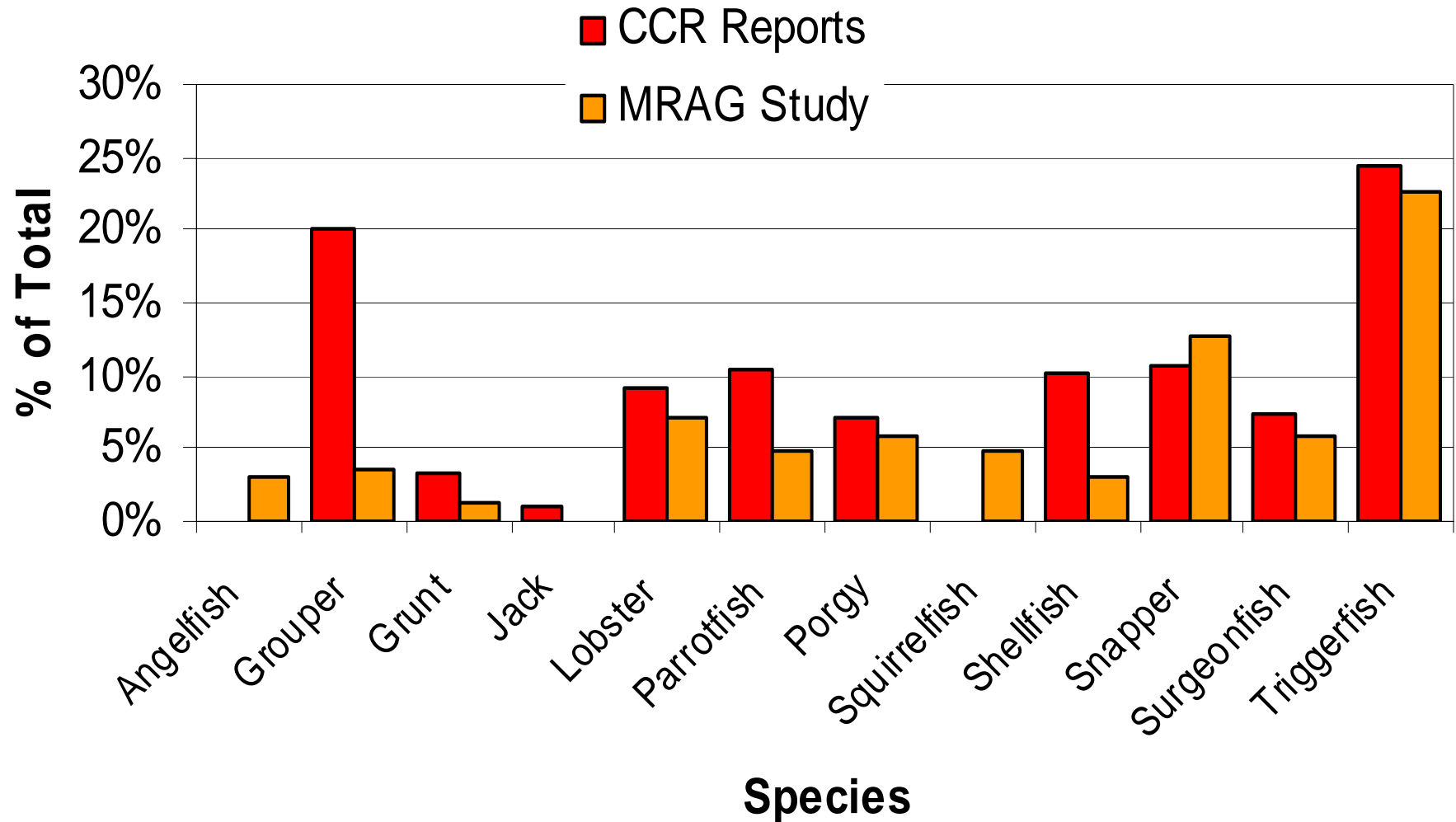
MSRA Management Reference Points

$OFL \geq ABC \geq ACL \geq ACT$



- Account for scientific uncertainty in estimating the true OFL. Recommend: $OFL > ABC$
- The ACL may not exceed the ABC.
 - ABC is one of the “fishing level recommendations” under MSA § 302(h)(6).
- Account for management uncertainty in controlling the actual catch to the target. Recommend: $ACL > ACT$

CCR vs MRAG Results Fish Traps



Action 3: Annual Catch Limits for Parrotfish Unit 1 and Parrotfish Unit 2

- **Alternative 1. No Action.**
- **Sub Alternative A. Do not set an ACL for Parrotfish Unit 1 or Parrotfish Unit 2.**
- **Sub Alternative B. Do not establish an ACL for Parrotfish Unit 2, but include Parrotfish Unit 2 in the ACL for Parrotfish Unit 1.**

Action 3: Annual Catch Limits for Parrotfish Unit 1 and Parrotfish Unit 2

- **Alternative 2. For Parrotfish Unit 2:**
- **Sub alternative A. Set the ACL equal to zero in the EEZ and do not establish a state water ACL but rely on the data collection program described later in this document and revisit ACL for parrotfish 5 years after implementation.**
- **Sub alternative B. Set the ACL equal to zero in the EEZ and recommend to Puerto Rico and the U.S.V.I. that the ACL be set equal to zero in state waters.**

Action 3: Annual Catch Limits for Parrotfish Unit 1 and Parrotfish Unit 2

- **Alternative 4. Set the ACL for Parrotfish Unit 1 off St Thomas/St John equal to:**
- **Sub alternative A. Zero for the EEZ and do not establish a state water ACL, but rely on the data collection program described later in this document and revisit ACL for parrotfish five years after implementation.**
- **Sub alternative B. The average landings during 1999-2006 = 50,000 pounds (ACLG February 2009 recommendation)**
- **Sub alternative C. The average landings during 1994-2006 multiplied by an uncertainty scalar (see Action 7 for uncertainty scalar).**

Action 3: Annual Catch Limits for Parrotfish Unit 1 and Parrotfish Unit 2

- **Alternative 5. Set the ACL for Parrotfish Unit 1 off St. Croix equal to:**
- **Sub alternative A. Zero for the EEZ and do not establish a state water ACL, but rely on the data collection program described later in this document and revisit ACL for parrotfish five years after implementation.**
- **Sub alternative B. The average landings during 1999-2006 = 250,000 pounds (ACLG February 2009 recommendation)**

Action 3: Annual Catch Limits for Parrotfish Unit 1 and Parrotfish Unit 2

- **Sub alternative C. The average landings during 1994-2006 multiplied by an uncertainty scalar (see Action 7 for uncertainty scalar).**
- **Sub alternative D. The average landings during 1976-1990 = 82,000 pounds (discussed at the ACLG and SSC February 2009 meeting).**

Action 4: Annual Catch Limits for Grouper Unit 4

- **Alternative 1. No Action.** Do not set an ACL for Grouper Unit 4
- **Alternative 2. Set the ACL for Grouper Unit 4 off Puerto Rico equal to:**
 - **Sub alternative A.** Zero in the EEZ and do not establish a state water ACL, but rely on the data collection program described later in this document and revisit ACL for Grouper Unit 4 five years after implementation.
 - **Sub alternative B.** The average corrected landings for identified Grouper Unit 4 species during 1994-2006 = 10,000 pounds. The ACL would include both state and federal water landings.

Action 4: Annual Catch Limits for Grouper Unit 4

- Alternative 3. Set the ACL for Grouper Unit 4 off St Thomas/St John at:
- Sub alternative A. Zero for the EEZ off St Thomas/St John and do not establish a state water ACL, but rely on the data collection program described later in this document and revisit ACL for Grouper Unit 4 five years after implementation.
- **Sub alternative B. The average landings during 1994 - 2006 for all Grouper species = 61,000 pounds as part of a Grouper ACL**
- Sub alternative C. The average landings during 1994 - 2006 for all Grouper species multiplied by an uncertainty scalar (see Action 7 for uncertainty scalar).

Action 4: Annual Catch Limits for Grouper Unit 4

- Alternative 4. Set the ACL for Grouper Unit 4 off St. Croix at:
 - Sub alternative A. Zero for the EEZ off St Croix and do not establish a state water ACL, but rely on the data collection program described later in this document and revisit ACL for Grouper Unit 4 five years after implementation.
 - **Sub alternative B. The average landings during 1994 - 2006 for all Grouper species = 32,000 pounds as part of a Grouper ACL**
 - Sub alternative C. The average landings during 1994 - 2006 for all Grouper species multiplied by an uncertainty scalar (see Action 7 for uncertainty scalar).

Action 5: Annual Catch Limits for Snapper Unit 1

- **Alternative 3. Set the ACL for Snapper Unit 1 off St Thomas/St John at:**
- **Sub alternative A. Zero for the EEZ off St Thomas/St John and do not establish a state waters ACL, but rely on the data collection program described later in this document and revisit ACL for Snapper Unit 1 five years after implementation.**
- **Sub alternative B. The average landings during 1994 - 2006 for all Snapper species =160,000 pounds as part of a Snapper ACL**
- **Sub alternative C. The average landings during 1994 - 2006 for all Snapper species multiplied by an uncertainty scalar (see Action 7 for uncertainty scalar).**

Action 5: Annual Catch Limits for Snapper Unit 1

- **Alternative 4. Set the ACL for Snapper Unit 1 off St. Croix at:**
- **Sub alternative A. Zero for the EEZ off St Croix and do not establish a state waters ACL, but rely on the data collection program described later in this document and revisit ACL for Snapper Unit 1 five years after implementation.**
- **Sub alternative B. The average landings during 1994 - 2006 for all Snapper species =112,000 pounds**
- **Sub alternative C. The average landings during 1994 - 2006 for all Grouper species multiplied by an uncertainty scalar (see Action 7 for uncertainty scalar).**

Action 6: Annual Catch Limits for the Recreational Sector

- **Alternative 1. No Action. Do not set ACLs for the Recreational Sector**
- **Alternative 2. Use Puerto Rico recreational average landings data from MRFSS during 2000-2007 to set recreational ACLs in the EEZ and state waters of Puerto Rico for Snapper Unit 1, Grouper Unit 4, and Parrotfishes. Use the proportion of Puerto Rican recreational landings relative to the total of recreational and commercial Puerto Rican landings to set an ACL proxy in the EEZ and state waters for the USVI Recreational Fishery. For the USVI, proportions would be assigned to fish family (e.g., groupers, snappers, parrotfishes), until sufficient landings data are available to specify ACLs by unit. ACLs would equal zero for queen conch in the EEZ off St. Thomas/St. John and Puerto Rico; the recreational ACL for queen conch in the EEZ off St Croix would be XXX (will depend on Council's choice for commercial ACL in St Croix). All island based recreational ACLs for Nassau grouper would equal zero.**


Action 6: Annual Catch Limits for the Recreational Sector

- **Alternative 3.** Use Puerto Rico recreational average landings data from MRFSS during 2000-2007 to set recreational ACLs in the EEZ and state waters for Snapper Unit 1, Grouper Unit 4, and Parrotfishes. Use the proportion of Puerto Rican recreational landings relative to the total of recreational and commercial Puerto Rican landings to set an ACL proxy in the EEZ.
- **Alternative 4.** Do not establish a recreational ACL in the USVI EEZ and state waters, but use the Commercial ACL for each unit or family as a proxy for the ACL for all sectors in the fishery.

Action 7: Accounting for Uncertainty

- **Alternative 1. No Action. Set the ACL at the level specified in the previous actions**
- **Alternative 2. In the USVI, for ACLs based on average catch, use:**
 - **Sub alternative A. 90% of the specified level in the previous actions to adjust for uncertainty.**
 - **Sub alternative B. 75% of the specified level in the previous actions to adjust for uncertainty (recommendation from the national SSC meeting).**

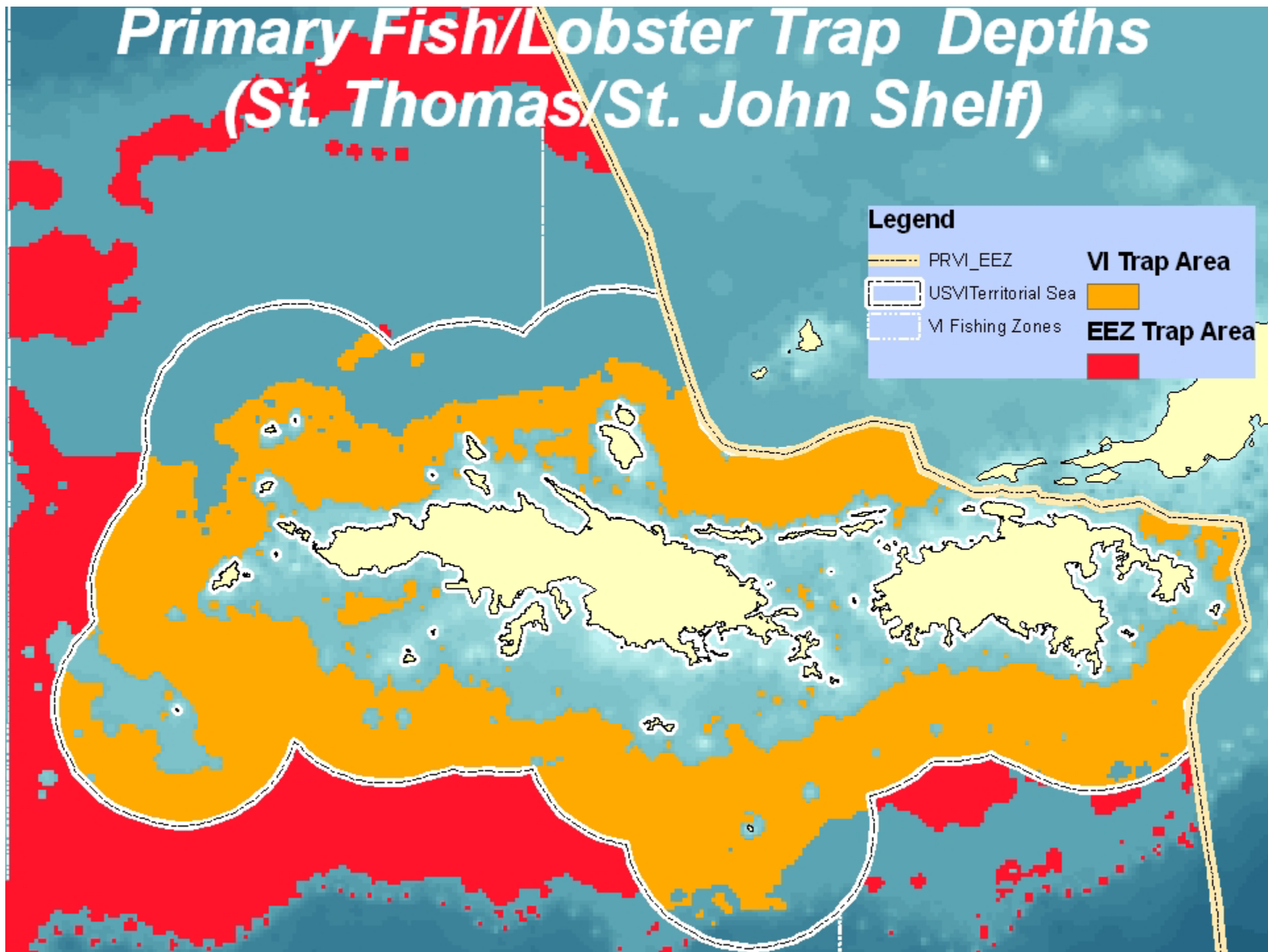
Action 7: Accounting for Uncertainty

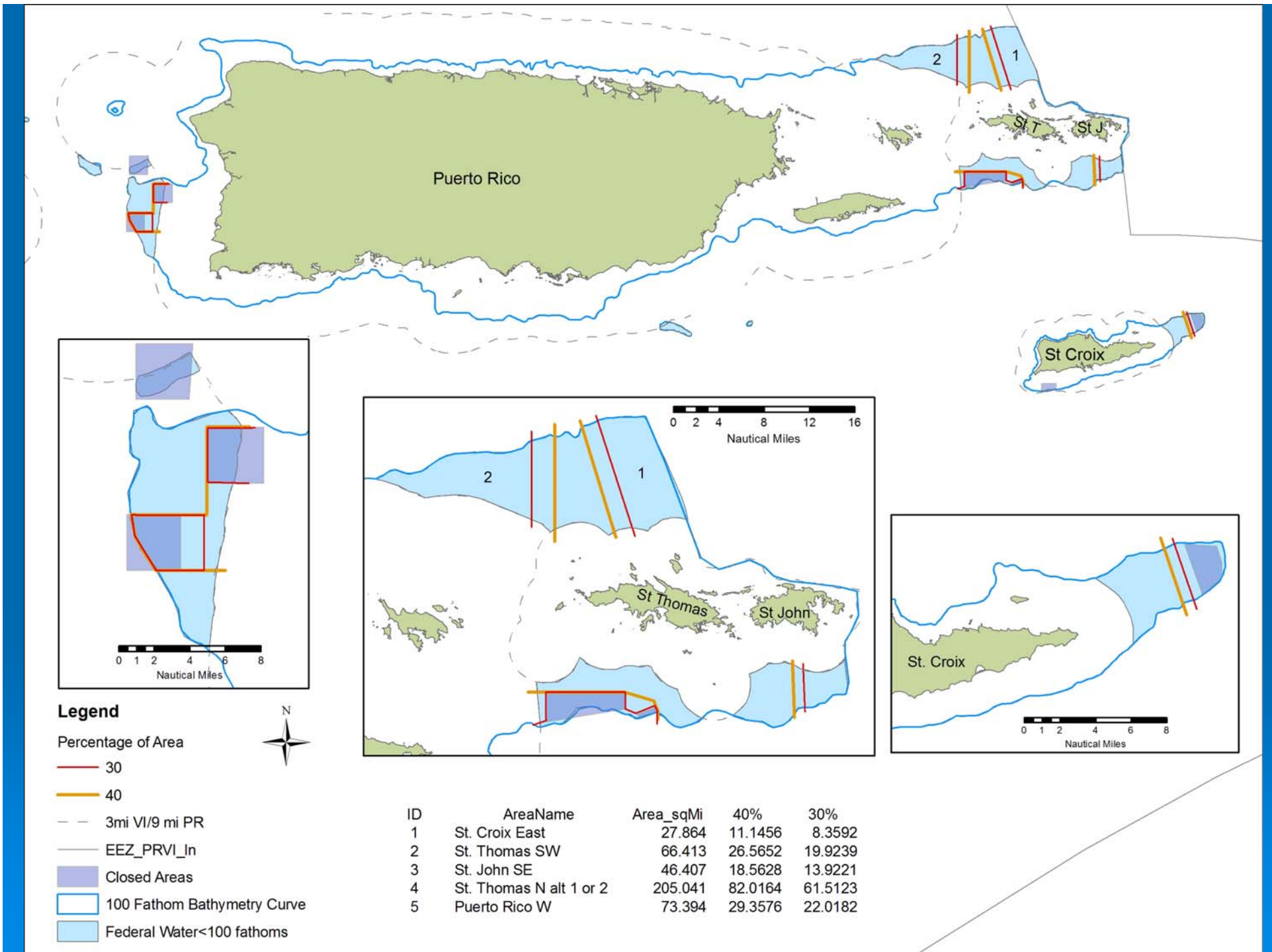
- **Sub alternative C. 70% of the specified level in the previous actions to adjust for uncertainty.**
 - **Sub Alternative D. 50% of the specified level in the previous actions to adjust for uncertainty (recommendation from the national SSC meeting).**
- 

Action 8: Alternative Methods for Reducing Fishing Mortality and Establishing ACL Proxies

- **Alternative 1. No Action. Do not implement alternative methods for reducing fishing mortality by establishing proxies for ACLs**
- **Alternative 2. Extend Area Closures in the U.S. Caribbean EEZ to account for 40% of fishable bottom in the EEZ**
- **Alternative 3. Extend Area Closures in the U.S. Caribbean EEZ to account for 30% of fishable bottom in the EEZ**

Primary Fish/Lobster Trap Depths (St. Thomas/St. John Shelf)





Action 9: Permits

- **Alternative 1. No Action. Do not establish a permit system for fishing in the EEZ**
- **Alternative 2. Require a federal permit for fishing in the EEZ.**
- **Sub Alternative A. Require a federal permit for recreational fishing in the EEZ.**
- **Sub Alternative B. Require a federal permit for commercial fishing in the EEZ.**

Action 9: Permits

- **Sub Alternative C. Require the use of trap tags for all (lobster and fish) trap fisheries in the EEZ.**
- **Sub Alternative D. Require a federal permit for charter boats fishing in the EEZ.**
- **Alternative 3. Require a federal permit to sell Council managed species.**
- **Alternative 4. Require a federal permit to purchase Council managed species.**

Action 10: Monitoring and Enforcement of Annual Catch Limits

- **Alternative 1. No Action.** Set the ACL at the level specified in the previous actions.
- **Alternative 2.** Require any person landing Council managed species to submit an appropriate data collection form, as developed by the SEFSC or the Council's SSC, after every trip with enough detail such that CPUE per species can be calculated for each gear.
- **Alternative 3.** Require any federal permit holder to submit an appropriate data collection form, as developed by the SEFSC or the Council's SSC, after every trip with enough detail such that CPUE per species can be calculated for each gear.

Action 11: Accountability Measures

- **Alternative 1. No Action. Do not establish Accountability Measures.**
- **Alternative 2. Implement accountability measures for exceeding an ACL based on:**
 - **Sub alternative A. A single year of landings/catch.**
 - **Sub alternative B. A 2-year average of landings/catch.**
 - **Sub alternative C. A 3-year average of landings/catch.**

Action 11: Accountability Measures

- **Alternative 3. Reduce the fishing season in the following year by a length determined to be appropriate to account for exceeding the ACL.**
- **Alternative 4. Increase the size of closed areas as identified in Action 9 by an appropriate amount to account for exceeding the ACL.**
- **Alternative 5. For queen conch exceedences in St Croix, close the EEZ to queen conch harvest**

Action 12: Allowable Gear for Reef Fish

- **Alternative 1. No Action. Do not alter allowable gear in the U.S. Caribbean**
- **Alternative 2. Prohibit the use of SCUBA-assisted fishing**

They haven't said it but you know they want to get rid of traps